

RT16 | AN INTEGRATED RESEARCH AGENDA FOR SMART FOOD DISTRICT. DISCUSSING THE CASES OF LISBON AND AMSTERDAM

Chairs

- Dirk M. Wascher, Wageningen Environmental Research;
- Jorge Cancela, Faculty of Architecture of the University of Lisbon.

Speakers

- Rosario Oliveira, Institute of Social Sciences - ULisboa;
- Samuel Niza, Instituto Superior Técnico - ULisboa.

Description

As hotspots of urban-agricultural innovation, cities and their surrounding metropolitan regions are places where local, regional and global agro-food processes have a great potential for generating synergy with food supply and consumption as one of the key driving forces. Moving away from an agricultural productionist mind-set and policy-model towards an integrated multi-sector collaboration targeting at 'smart food districts' (SFD) is challenging not only the associated stakeholders along the food chain, but also researchers to enter new forms of trans-disciplinary research.

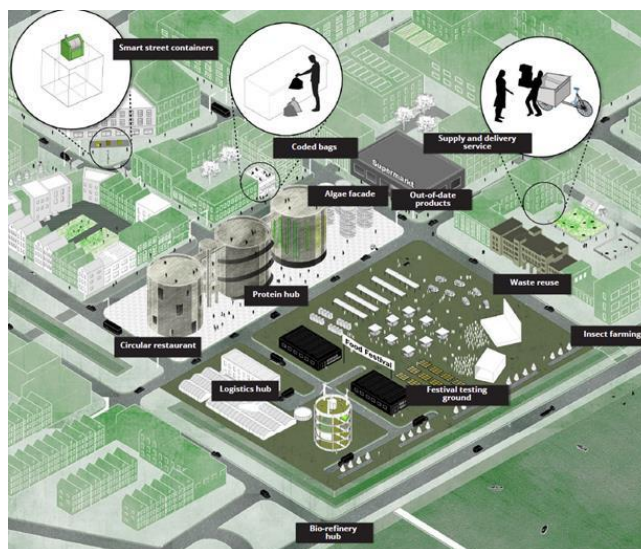


Fig. 1: Spatial vision map indicates how circular strategies for the organic residual streams in Amsterdam can be applied and how they are interwoven in a spatial context. The following strategies are described: (1) central bio-refinery hub, (2) waste separation and return (Circular Amsterdam 2015).

The latter suggests to rethink and redesign the urban-rural interface with the goal of establishing a more resilient link between food security and food safety at the level of metropolitan regions. Such an approach needs to adhere to the following principles: (1) resource efficiency measures for saving energy, water, nutrients and space, (2) circular

economy to minimize waste and optimise value chains, and (3) urban planning that follows the principles of 'nature-based solutions' (4) embedded in urban societal themes where vertical and horizontal integration becomes part of a wider metropolitan food system.

The example of the Amsterdam Metropolitan Region demonstrates (see Figure 1) that municipalities have already undertaken targeted research on localizing urban switchboards for sustainable food planning.

The example of Lisbon Metropolitan Area can be seen from a different perspective in which there is an enormous potential for an innovative urban food planning but little has been done so far.

The programme 'The Feeding city', developed in Amsterdam's satellite city of Almere putting forward a sustainability agenda for the upcoming horticultural world-exhibition 'Almere-Floriade 2022' which might serve as an example for tomorrow's research agenda where the whole city takes the role of a 'living lab' in which to develop new approaches towards 'smart food districts' as part of the Growing Green City ambitions.

This Roundtable is meant to compare and discuss integrated urban research agenda's to benchmark and frame the ambitions of the research communities.