



LISBON:
EXCLUSIVE/INCLUSIVE CITY

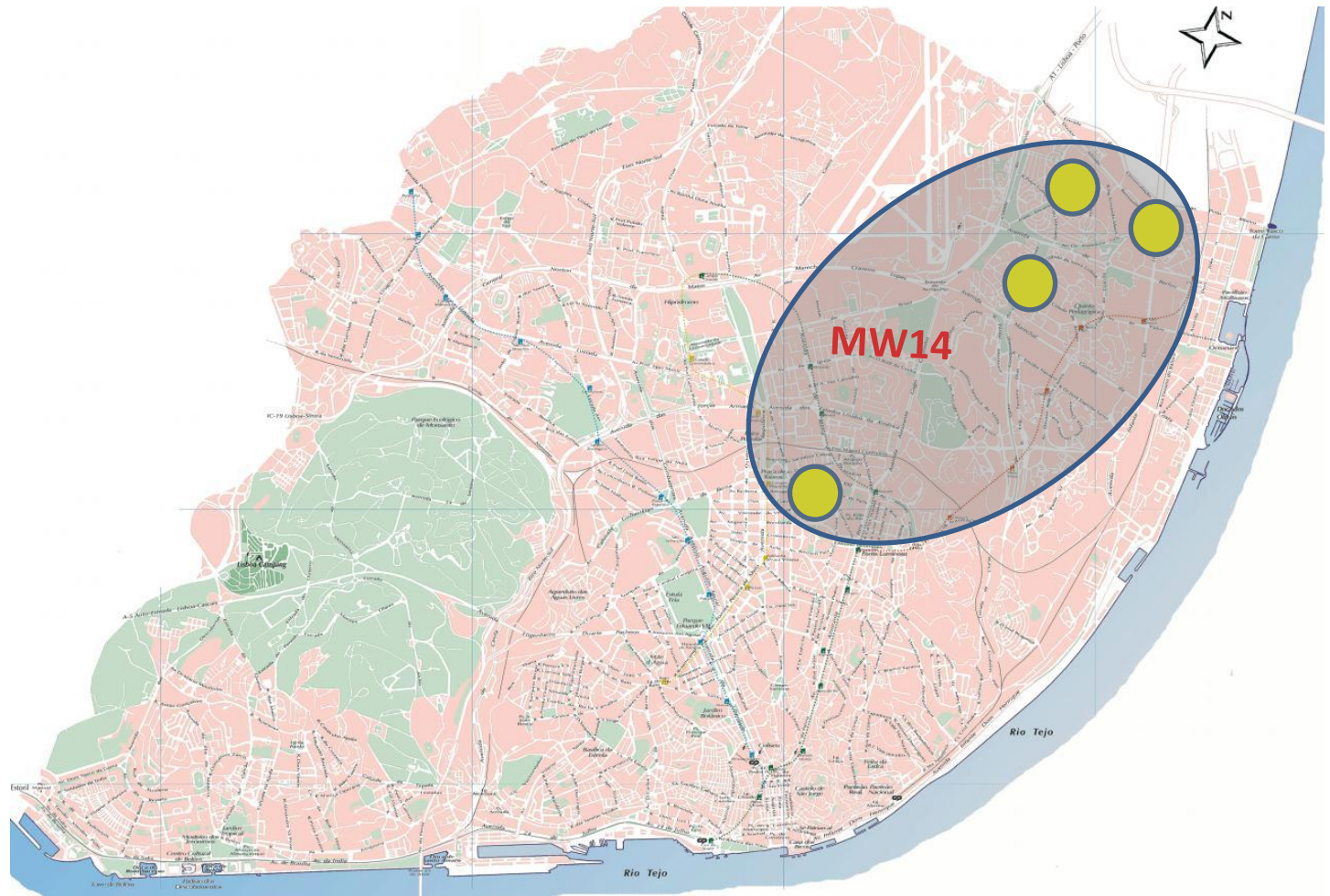
Mobile Workshop

MW12

Social housing programmes:
from old to new models



Social housing programmes: from old to new models



Coordination**Jorge Malheiros (IGOT); Eduardo Ascensão (IGOT)**

As in other Southern European countries, Portugal has historically followed a residualist approach to public housing. As a consequence, after 100 years of social housing programmes of different types, the social housing stock represents less than 3% of the total in the whole country and approximately 8% in the city of Lisbon.

The route of this visit comprehends some examples of social housing neighbourhoods that illustrate different social, physical and planning contexts as well as various stages of Portuguese housing policy.

The visit will start in Bairro do Arco Cego, one of the oldest materialised examples of social housing production in Portugal, programmed by the First Republic in the 1910s and finished 20 years after by the dictatorship regime that started in 1926. We will then move to the east part of Lisbon with the purpose of visiting Bairro da Encarnação, an example of a detached housing neighbourhood produced under the Programme *Casas Económicas* (Economic Homes), constructed in the 1940s by the *Estado Novo* fascist-type regime. Finally, the tour includes visits to multi-storey social housing neighbourhoods which illustrate the expansion of social housing construction in this part of Lisbon in the 1960s and 1970s and also the last social housing plan developed in democratic Portugal (1990-2000s): the Special Rehousing Programme (PER).

Duration: 4 hours**Difficulty:** low-medium**Transport:** metro; plus walking